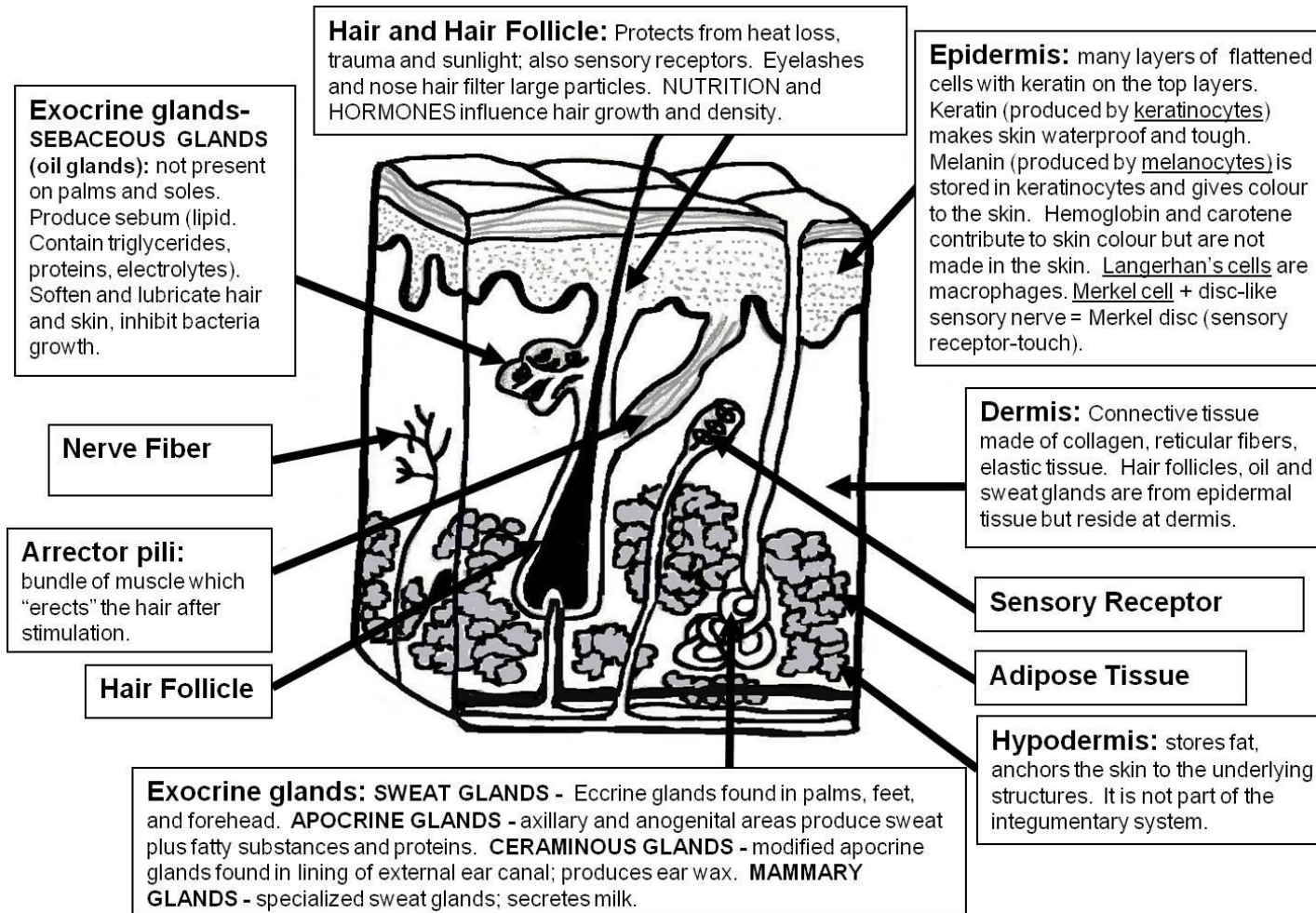


# Integumentary System



## Cutaneous Membrane

COMPONENTS	LAYERS	CHARACTERISTICS			
		Localization	Structure	Cells	General Characteristics
	Stratum corneum				
	Stratum lucidum				
	Stratum granulosum				
	Stratum spinosum				
	Stratum germinativum				
	Papillary layer				
	Reticular layer				



## Exocrine Glands

Types	Sub-types	Localization	Type of Secretion	Function	General Characteristics
Sebaceous (oil glands)	–				
	Apocrine				
	Merocrine (eccrine)				

